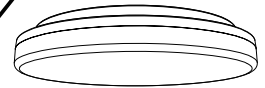


## Ceiling Mounted Light Installation Instructions —Microwave Sensor Version

MINT



This product contains a light source of energy efficiency class: F



- EN** To secure safety, a qualified electrician is required to install/remove the luminaire.
- DE** Aus Sicherheitsgründen ist der Einbau/Ausbau dieser Leuchte nur durch eine Elektrofachkraft vorzunehmen.
- FR** Afin de garantir la sécurité du luminaire, celui-ci doit être installé ou retiré par un électricien qualifié.

- IT** Per garantire massima sicurezza, far eseguire il lavoro di installazione/rimozione della lampada da un elettricista specializzato.
- ES** Para asegurar la seguridad, se requiere un electricista cualificado para instalar / retirar la luminaria.
- PT** Para a sua segurança, um eletricitista qualificado deve atuar na instalação/remoção da luminária.



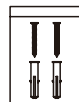
- EN** The luminaire is used exclusively for lighting and is to be installed/ removed in accordance with IEEE regulations and installation instructions.
- DE** Die Leuchte ist ausschliesslich für Beleuchtungszwecke vorgesehen. Der Einbau/Ausbau hat gemäss den einschlägigen nationalen Richtlinien und Vorschriften sowie den beiliegenden Montageanweisungen zu erfolgen.
- FR** Le luminaire ne doit être utilisé qu'à des fins d'éclairage et doit être installé ou retiré conformément aux réglementations relatives aux DEEE et aux instructions d'installation.

- IT** La lampada va utilizzata esclusivamente per funzioni di illuminazione e va installata/rimossa ai sensi dei regolamenti IEEE e delle istruzioni di installazione.
- ES** La luminaria se utiliza exclusivamente para iluminar y tiene que instalarse / retirarse de acuerdo con las instrucciones de instalación y las normativas de la IEEE.
- PT** A luminária é utilizada exclusivamente para iluminação e deve ser instalada/removida de acordo Com as regulações e instruções de instalações IEEE.

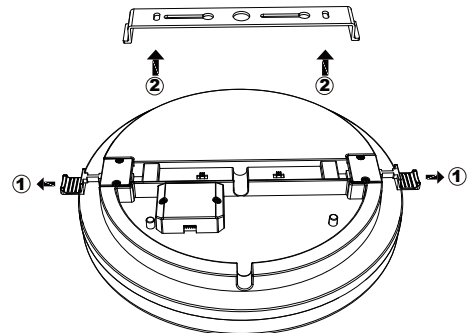


An LED ceiling light

Accessories

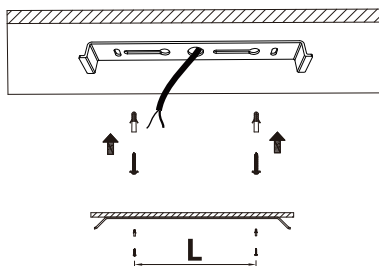


Pull the slider out and separate the mounting bracket.



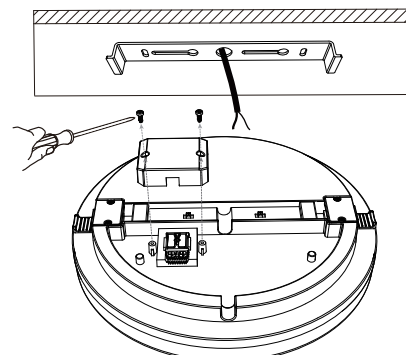
1

Install the bracket onto desired location.



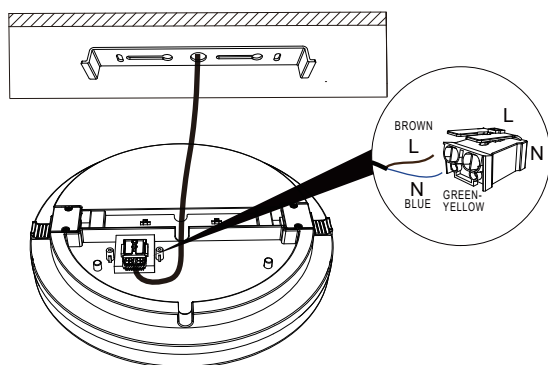
2

Open the junction box by tool.



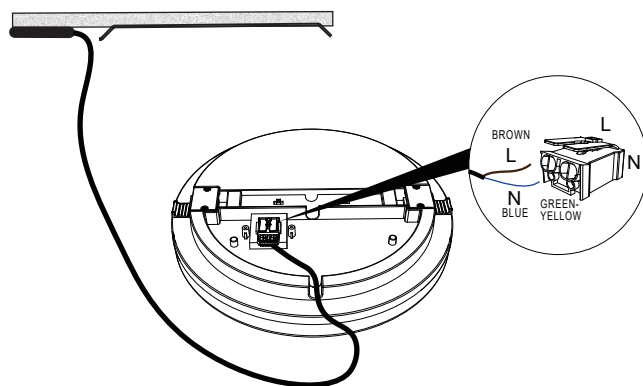
3

Power cable comes from top.



4A

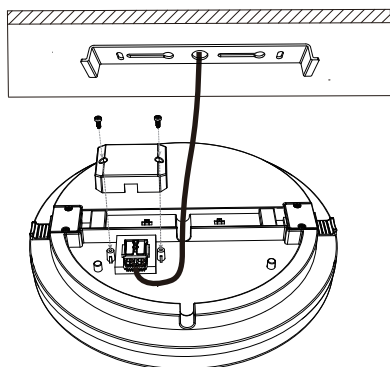
Power cable comes from side.



4B

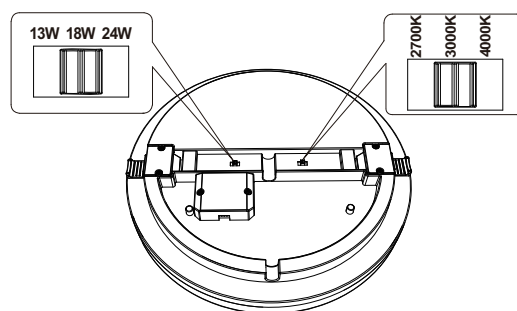


Close the junction box by tool.



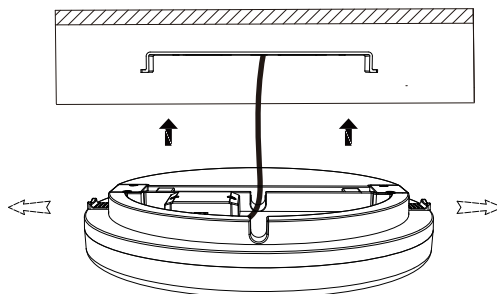
5

Select desired colour temperature & wattage.



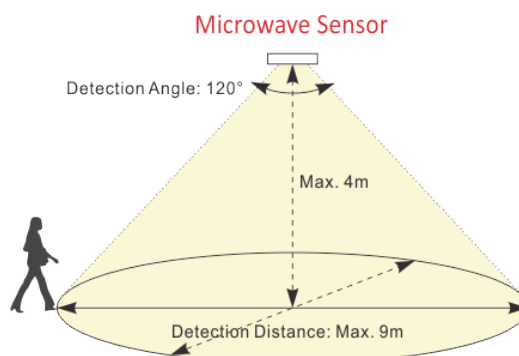
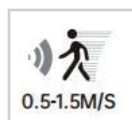
6

Install the luminaire back on its bracket.



7

## Detection Patterns

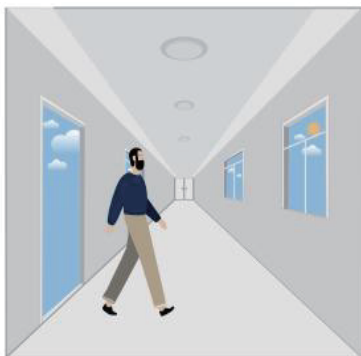


Highest mounting height is 4m.

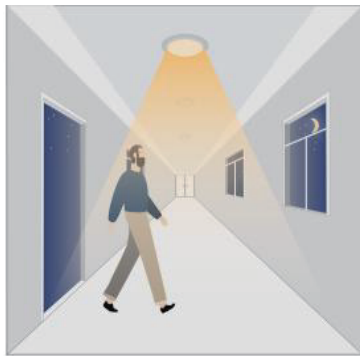
This figure indicates the maximum distance at the highest mounting height with 100% sensitivity.

## Performance

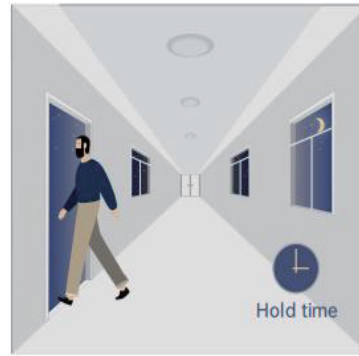
### 1. Automatically ON/OFF functioncy.



With sufficient daylight, even when motion detected, light remains OFF.



With insufficient daylight, the sensor turns light ON when motion gets detected.

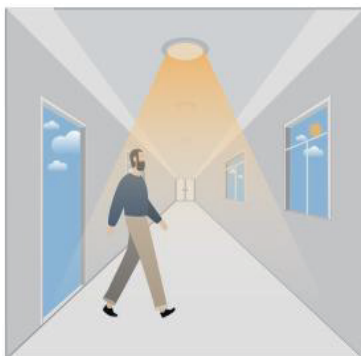


The sensor turns OFF light automatically after the holdtime when there's no motion detected.

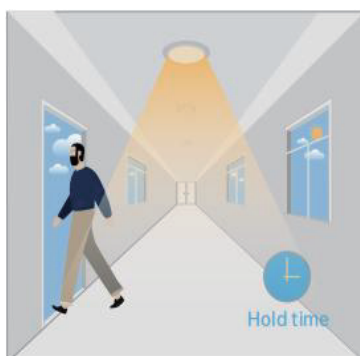
### 2. Daylight Disable

When daylight threshold is preset as "disable", the sensor turns light ON.

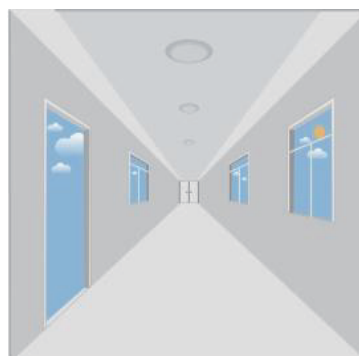
When motion gets detected, the sensor turns light ON, and OFF after hold-time.



The sensor turns light ON when motion gets detected.



The sensor keeps light ON for holdtime period after motion leaves.



The sensor turns OFF light automatically after the holdtime.



## Instruction manual for the remote control

Default Setting: 50% induction distance, Half the brightness(2Lux), 5s hold time.

